

Winona Area Public Schools

Lifting Up Every Winhawk

A proposal of strategies and programs to support students in Winona Area Public Schools using ESSER funding.



What is ESSER funding?

In response to the COVID-19 pandemic, the federal government released three rounds of Elementary and Secondary School Emergency Relief (ESSER) funding. Each round came with different restrictions for its use, whether it was meant to address COVID-19 preparedness, summer opportunities to address learning acceleration, or to help stabilize district budgets amid unpredictable enrollment swings.

An investment in our students

Because of this federal funding, Winona Area Public Schools is able to invest \$5.6 million over the next three years (about a 4.8% increase to the budget) to support our students as they recover from the COVID-19 pandemic. The strategies and programs included in this proposal are aligned with our strategic plan, complement the supports already in place, build on initiatives already underway, and will focus on addressing students' academic, behavioral and social-emotional needs.



Lifting Up Every Winhawk

#WinhawkProud

A comprehensive solution

It is impossible to address the academic needs of our students without addressing their social-emotional and mental health needs first. The strategies and programs identified here will be measurable in order to provide the school board with data to make informed decisions on student supports in the future.

How do we lift up every Winhawk?

- **Student Success Department**
- **Learning Acceleration**
- **Multi-Tiered Systems of Support (MTSS)**
- **WAPS Online Academy**
- **Specialized Program Support**
- **AVID District-Wide**
- **Social-Emotional Screener**
- **Professional Development**
- **Family Engagement**
- **COVID-19 Mitigation**

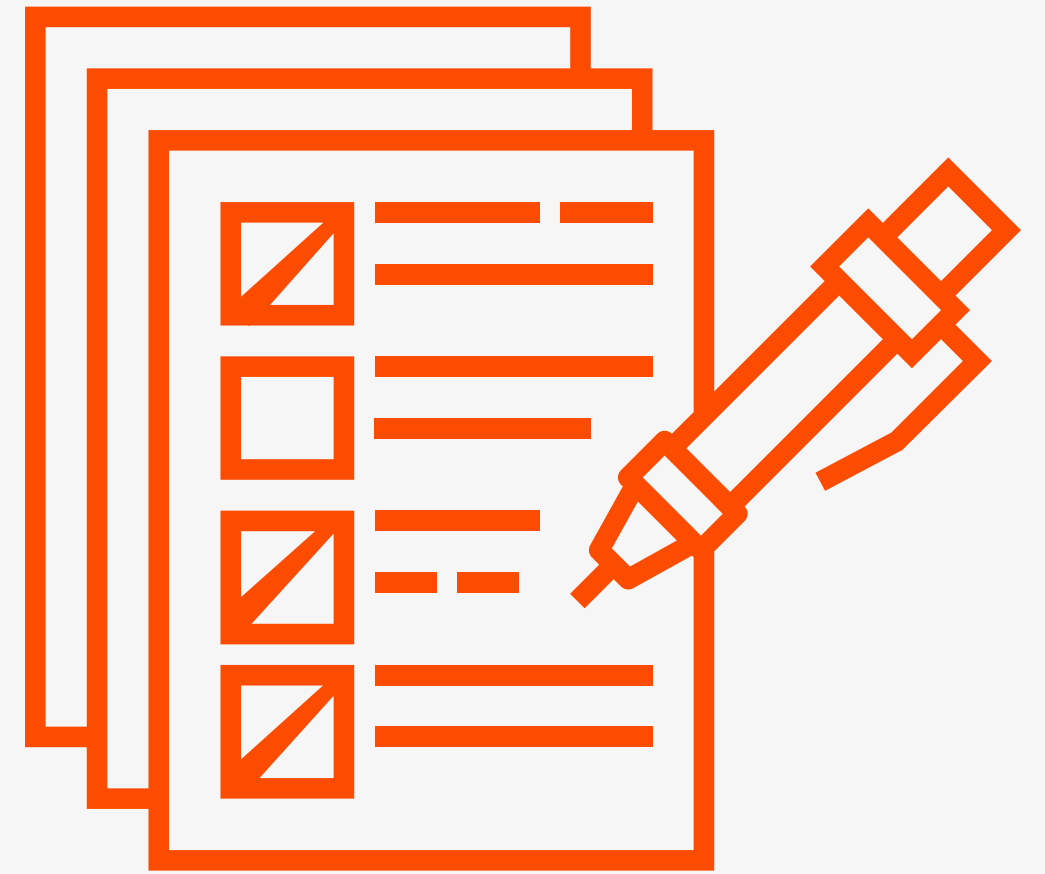
Student Success Department

Creation of the student success support department, which will include hiring student success coaches devoted to working with students and families of color, different socioeconomic backgrounds, newcomers (immigrants), migrants, homeless and impacted by mental health.



Social-Emotional Screener

Implementation of DESSA (Devereaux Student Strengths Assessment), a reliable, efficient, strengths-based social-emotional learning screener to provide our educators and support staff with the right data to meet our students' varying needs.



Multi-Tiered System of Supports

Continued implementation of Multi-Tiered System of Supports (MTSS), a framework that organizes the district's resources to address each individual student's academic, behavioral and social-emotional needs across a continuum from intensive interventions to challenging high-achieving students.



Learning Acceleration

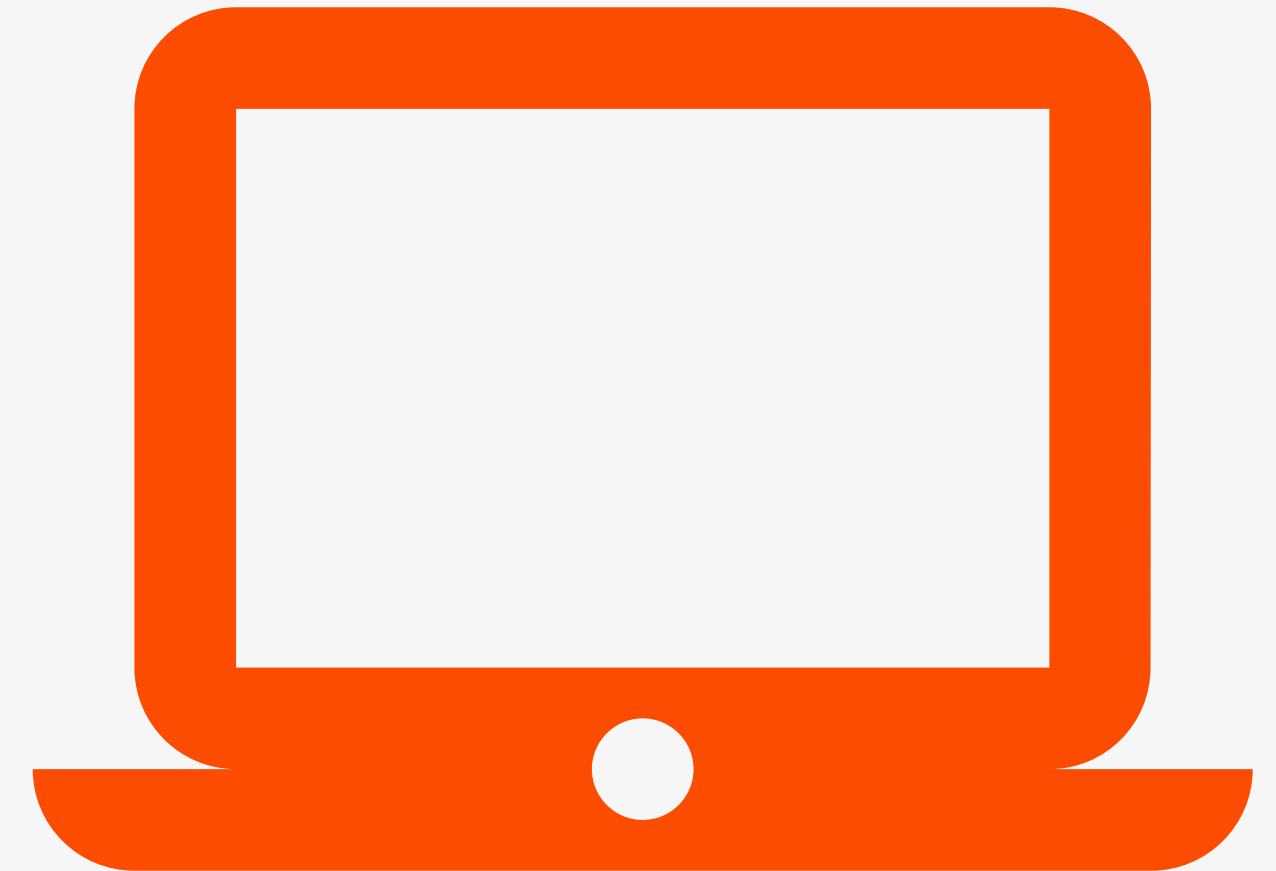
Strategies to address learning acceleration, including:

- **Extra staffing to keep class sizes small.**
- **An elementary science specialist to boost science learning and allow teachers more time for reading and math interventions.**
- **Tutoring support at all levels, during the school day and after school.**



WAPS Online Academy

Building the WAPS Online Academy into a permanent option for all students with additional staffing and support.



Specialized Program Support

- Scholarships, curriculum and furniture for early childhood programs.
- District-wide behavioral assistants and coordination for Special Education.
- A full-time English Language teacher to support students in the EL program in-person and online.
- District-wide English Language Arts curriculum



AVID Program

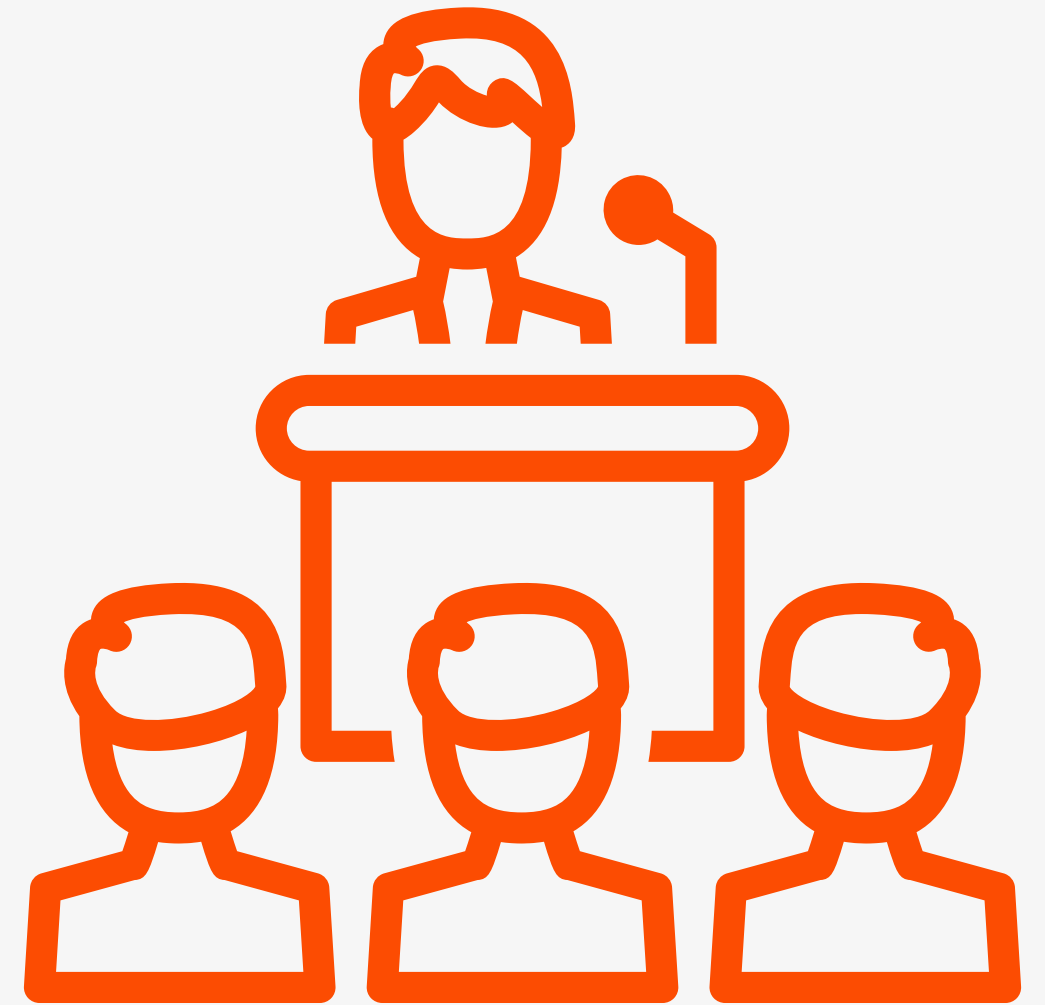
District-wide implementation of AVID (Advancement Via Individual Determination), a program designed to close the opportunity gap that has been in place in the high school and middle school.



Professional Development

**Winhawk Learning and Teaching Summer Academy,
a professional development series for our
educators focusing on multiple areas, including:**

- **Social-emotional learning**
- **Trauma-informed practices**
- **Restorative practices**
- **Mental health**
- **De-escalation strategies**
- **Cultural competency**
- **Poverty**



Family Engagement

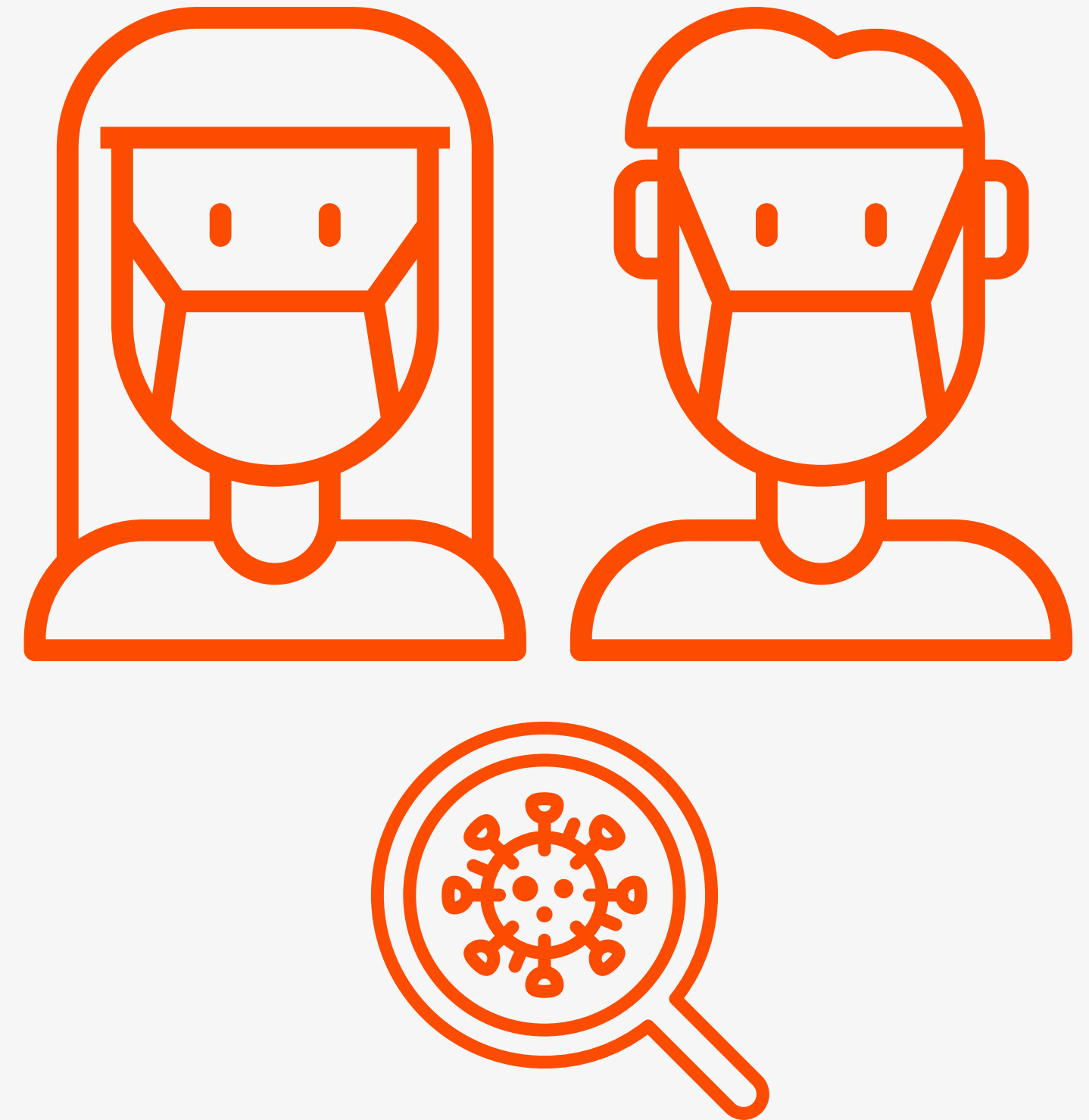
Funding for school buildings to support family engagement activities focused on:

- **Communication**
- **Assistance with student learning**
- **Support and partnership through welcoming parents to school**
- **Making decisions with families**
- **Leveraging community resources to strengthen schools, families and student learning**
- **Multicultural events.**



COVID-19 Mitigation

COVID-19 mitigation strategies and equipment, including personal protective equipment for students and staff and a COVID-19 coordinator position to oversee the district's response.



What do you think? What did we miss?

Your feedback on this plan is very important to us. Please visit bit.ly/waps_esser to complete a short survey on our ESSER III Plan.